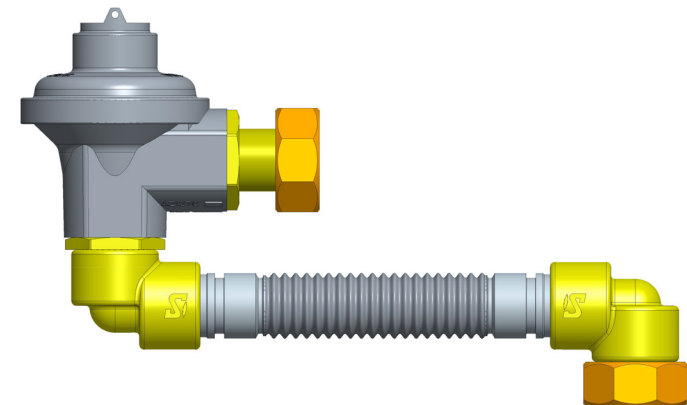


Kit Options

Inlet Kit: DKW103AA

Inlet kit for all boxes types using a G4 type meter

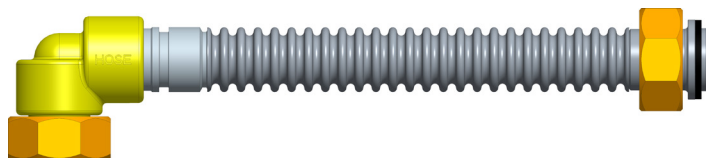


Distributor details



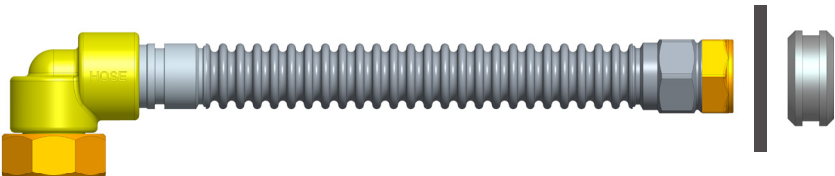
G4 Easy to Fit Semi-Concealed Meter Box Connection Kits

The **SMART** way to install smart meters



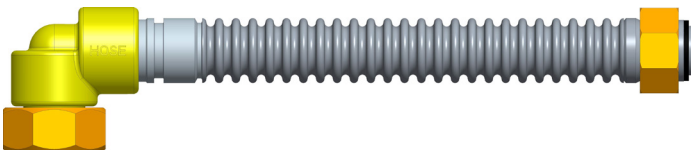
Outlet Kit: DKW104A

1" BS746 Outlet kit for a Wet box



Outlet Kit: DKW105A

22mm Copper compression Outlet kit for a Dry box



Outlet Kit: DKW106A

3/4" BS746 Outlet kit for a Dry box

YouTube To visit our Video Library go to: [www.youtube.com/user/CraneBSU](http://www.youtube.com/user/CraneBSU)



46-48 WILBURY WAY, HITCHIN, HERTFORDSHIRE, SG4 0UD  
TELEPHONE: +44 (0)1462 443 225  
FAX: +44 (0) 1462 443 311  
EMAIL: [sperrynsales@cranebsu.com](mailto:sperrynsales@cranebsu.com)  
[www.sperryn.co.uk](http://www.sperryn.co.uk)

Every effort has been made to ensure that the information contained in this publication is accurate at the time of publishing. Crane Ltd assumes no responsibility or liability for typographical errors or omissions or for any misinterpretation of the information within the publication and reserves the right to change without notice.

S\_EF\_0818



**ACT...**

**S**oldered parts removed  
**M**anoeuvrable  
**A**void unnecessary re-visits  
**R**educe installation costs  
**T**ime saved

PATENT  
PENDING

CONTINENTAL(DRY)



CONNECT (DRY)



MITRAS (DRY)



NATIONAL GRID (WET)



# G4 Easy to Fit Semi-Concealed Meter Box Connection Kits

This unique jointing system is the **SMART** way to install smart meters. It is highly flexible, allowing connection to a wide variety of semi-concealed meter boxes.



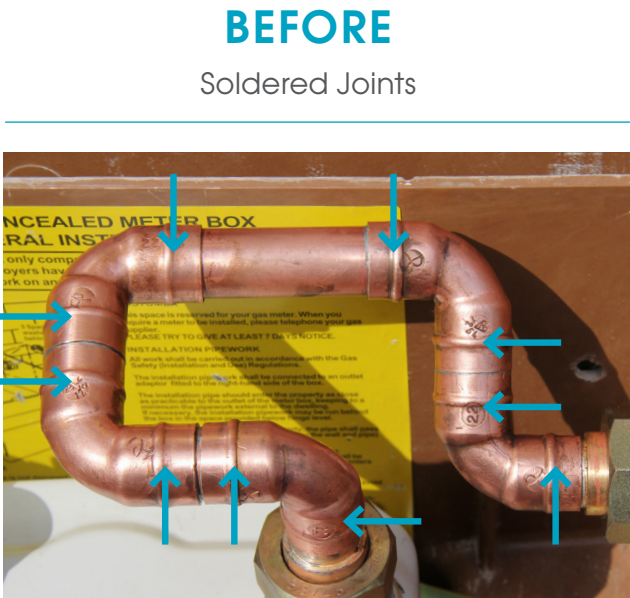
One kit covers all the inlet options for the most common boxes in the UK market and ensures quicker installation, as there are no joints to solder and no hot-works on site to consider. The convoluted Easy to fit hoses are easy to manipulate and, unlike hot works, need less qualified technicians to install.

A set of short video installation instructions are available to view, all of which guide the user easily through the step-by-step process for each box type. Each of the inlet kits includes the long-established Sperryn G940 MK3 Regulator. Therefore, the challenge of exchanging a meter in semi-concealed boxes just became so much easier with Easy to fit!

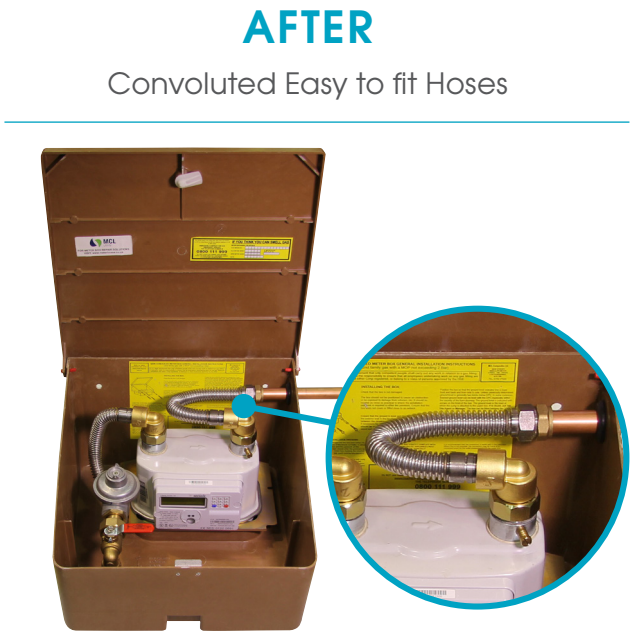
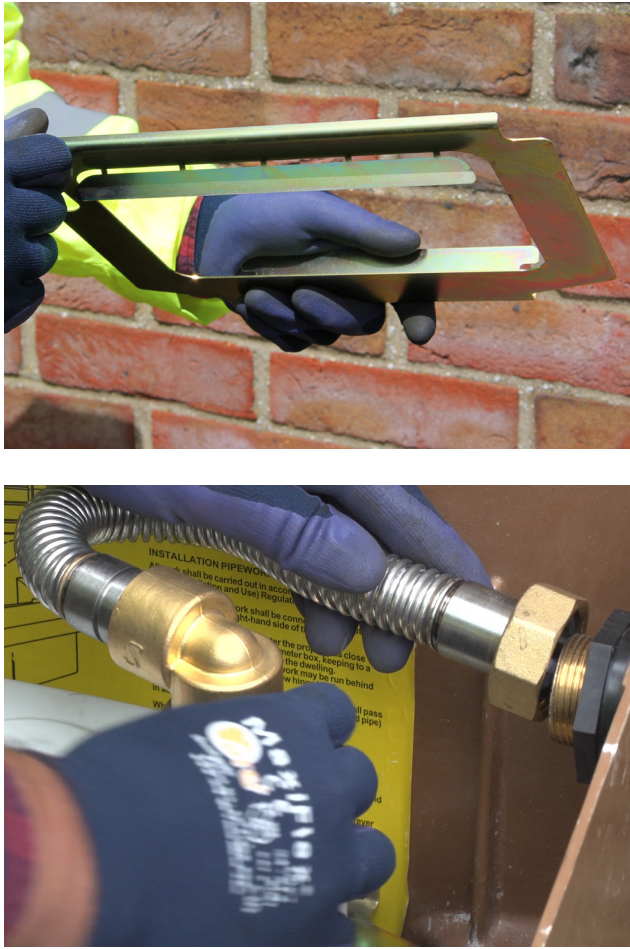
VIDEO GUIDES  
AVAILABLE ON  
**You Tube**

## So, what's new?

1. The meter bracket has been specially designed to work in all meter boxes and ensures a BS6400 compliant installation. This provides increased confidence that the solution will address all box types without having **prior knowledge of the installation**.
2. Low profile elbows ensure a **compact size envelope** and combined with a flexible joint ensures **less manual effort** for the installer to manipulate the flex hose, **reducing time** and associated **health and safety** issues.
3. The compression connection on the outlet kits for dry boxes means there is **no requirement to solder several joints**, again **reducing time**, particularly when experiencing inclement weather conditions.
4. Also, a common issue relating to **flux corrosion** within the meter installation will be eliminated, reducing health and safety concerns post-installation **and re-visit costs**.

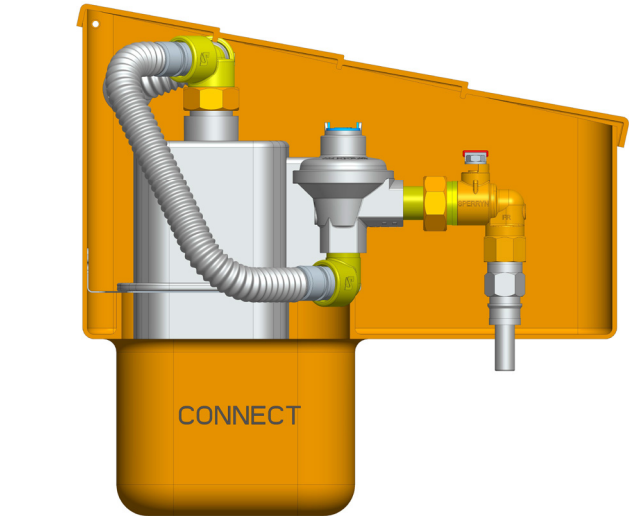


- 10 soldered Joints
- 10 possible leak paths
- Potential solder and flux damage to meter and entire installation



- First time connection
- Leak proof
- Ensures closure of lid

5. Connect Lid enclosure – New Easy to fit kit ensures lid closure even in the most challenging box types including Connect and Wet boxes.
6. Pressure drop tested in compliance with BS6400.



### Sperryn G940 Regulator – detailed view

The G940 domestic regulator offers high performance in a compact unit. Approved to British Gas Industry specification PRS/3E.

Regulator position can be manipulated through 360°

