

4" / DN100 G1000 (Angled)

SPERRYN
GAS CONTROLS 

Low Pressure Industrial & Commercial Regulator

APPLICATION / OPERATION

AS PART OF THE WIDER G1000 FAMILY OF PRODUCTS, THE 4" (DN100) DEDICATED ANGLED MODEL IS A LOW PRESSURE, COMPACT REGULATOR FOR LARGE COMMERCIAL AND INDUSTRIAL APPLICATIONS WITH EXCELLENT CAPACITY CAPABILITIES.

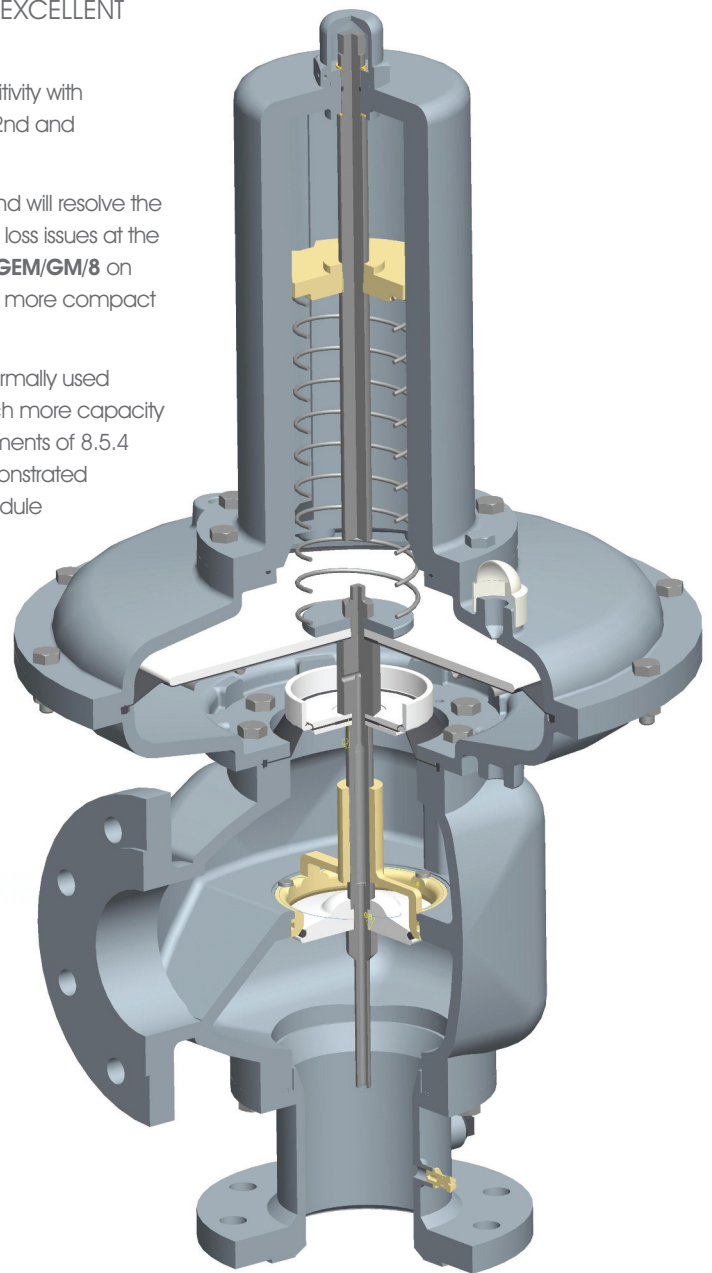
The G1000 links accurate pressure control, reliability, high efficiency and sensitivity with maximum flow and minimum pressure loss and is designed for use with 1st, 2nd and 3rd family gases.

The new design is specified for use on U160 meter modules in **IGEM/GM/6** and will resolve the issues related to the installation of unapproved smaller units causing pressure loss issues at the higher end of the capacity envelope. The unit can also be used in line with **IGEM/GM/8** on higher capacity rotary meter applications offering benefits both in terms of a more compact configuration for the installation but also related time and labour savings.

The regulator can be designed to fit into a GC7+ Kiosk and as this Kiosk is normally used for U65 and U100 LP diaphragm meter modules, this rotary option gives much more capacity for the same size of housing. The unit has been tested in line with the requirements of 8.5.4 of GM/6 (inlet pressure conditions for a low pressure network) and has a demonstrated capacity of 320 m³/hr as a standalone regulator and as part of a meter module up to 235 m³/hr.

BENEFITS & FEATURES

- 01:** Excellent capacity capabilities: Ensures wide range of metering applications
- 02:** Compact design: Ensures ease of installation and minimises kiosk/housing size requirements
- 03:** Lightweight: Lower unit weight than alternative solutions improving handling issues, saving transportation costs and reducing carbon footprint
- 04:** Quick response to rapid load changes
- 05:** Excellent outlet pressure control
- 06:** Internal impulse



OPERATING SPECIFICATION

Maximum Incidental Pressure	Operating Pressure Range	Outlet Pressure Range	Operating Temperature
350mbar	23.5mbar - 75mbar	17mbar - 37.5mbar	-20°C to +60°C

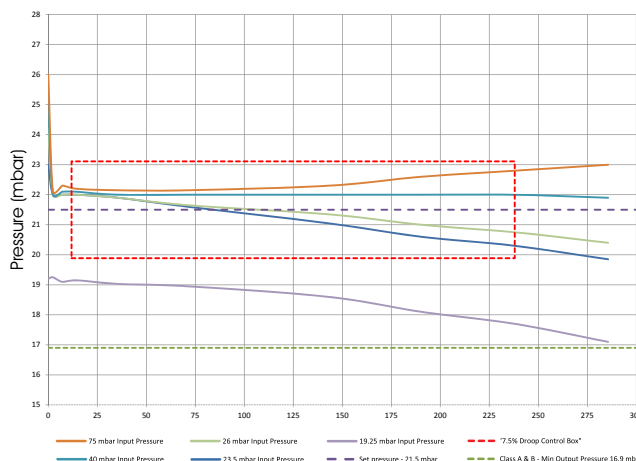
PERFORMANCE

Complies with UK specification PRS33 (Class B) and the European standard EN88:

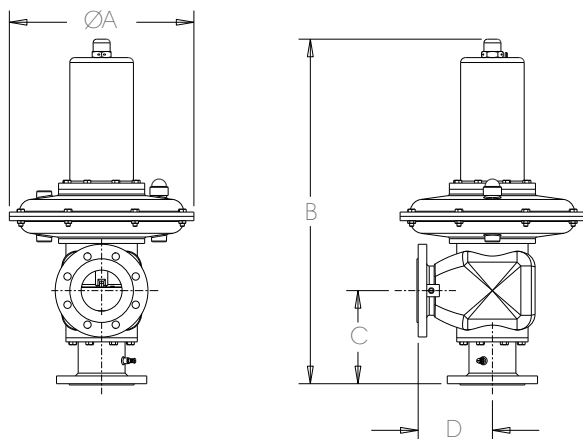
Capacity *	Nominal Outlet Pressure	Operating Accuracy
238m³/hr (0.64sg Natural Gas)	21mbar	±7.5%

* In accordance with PRS33. Higher capacity details available upon request

TESTED IN ACCORDANCE WITH PRS33



DIMENSIONS & WEIGHT



Connection Size	Weight	A	B	C	D
4" / DN100	43kg	450mm	840mm	227mm	181mm

MATERIALS

Name	Material
Body	Aluminium alloy
Diaphragm housings	Aluminium alloy
Spring cover	Aluminium alloy
Secondary plate	Aluminium alloy
Spindle	Aluminium alloy
Valve plate	Aluminium alloy
Valve spindle	Mild Steel
Impulse tube	Mild Steel
Primary Plates	Mild Steel
Diaphragm spacer	Mild Steel
PN16 Flanged	Mild Steel
Outlet	Mild Steel
Fasteners	Mild Steel
Spring adjuster	Brass
Valve seat & guide	Brass
Main & Secondary Diaphragms	Fabric reinforced Nitrile
O-rings	Nitrile
Springs	Spring Steel

SPERRYN

GAS CONTROLS



46-48 WILBURY WAY, HITCHIN, HERTFORDSHIRE, SG4 0UD
 TELEPHONE: +44 (0)1462 443225 FAX: +44 (0)1462 443225
 EMAIL: sperrynsales@cranebsu.com
www.sperryn.co.uk



To visit our Video Library go to:
www.youtube.com/user/CraneBSU

Every effort has been made to ensure that the information contained in this publication is accurate at the time of publishing. Crane Ltd assumes no responsibility or liability for typographical errors or omissions or for any misinterpretation of the information within the publication and reserves the right to change without notice.

S_G1000_ANGLED_0916

CRANE

BUILDING SERVICES & UTILITIES

www.cranesbu.com