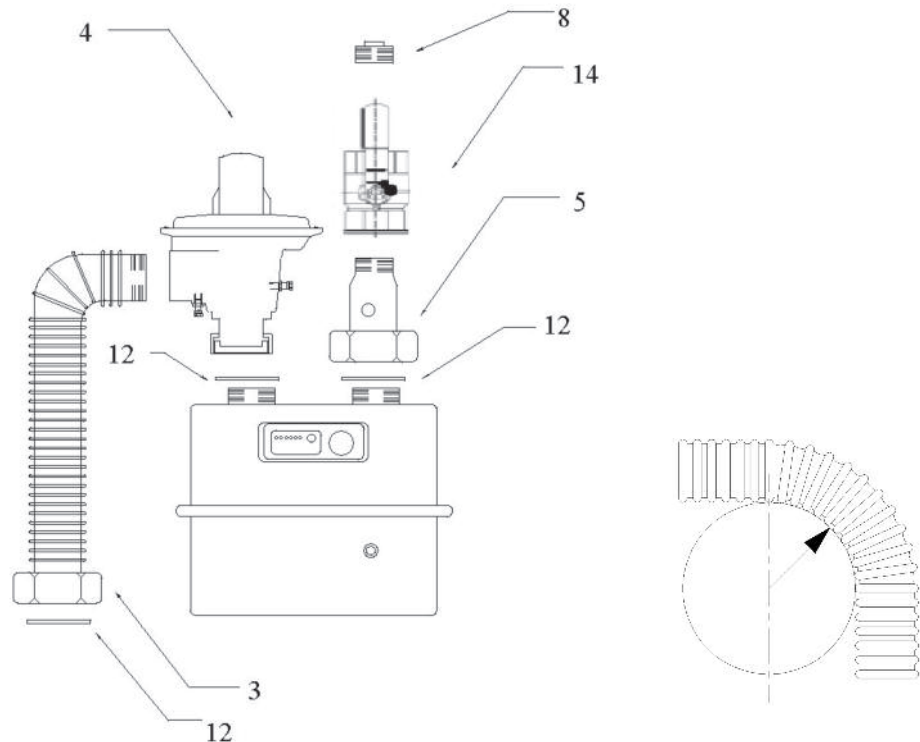


# M940-P U25 METER KIT



No.	Description	Qty
3	2" BS21 MALES x BS746 580mm LONG FLEXIBLE METALLIC CONNECTION	1
4	2" BS21 FEMALE x 2" BS746 OUTLET ANGLED PATTERN REGULATOR C/W PRESSURE TEST POINTS ON INLET AND OUTLET	1
5	2" BS21 MALE x 2" BS746 NUT AND LINER COMPLETE WITH 1/2" WELDED SOCKET AND MBT815 DRILLED PLUG	1
8	2" BS21 PLUG	1
12	2" BS746 WASHER	3
14	2" BS21 BALL VALVE FEMALE / FEMALE (TO BS1552 OR prEN331)	1
25	STATUTORY LABELS	1

- To be fitted by trained competent personnel.
- The meter kit should be visually inspected prior to installing for defects/faults.
- It is recommended that the regulator is mounted in the upright position where possible; however, it may be used in other orientations.
- The regulator unit is maintenance free with no user serviceable parts.
- The flexible hose must not be bent to a radius of less than:
 

Nominal Bore (mm):	20	25	32	50	80
Bend Radius (mm):	30	45	60	100	130
- The flexible hose is not suitable for multiple bending and may not be reused.

**SPERRYN**  
GAS CONTROLS

DELTA ROAD,  
ST HELENS, WA9 2ED  
TELEPHONE: +44 (0)1744 611 819

FAX: +44 (0)1744 26791  
EMAIL: sperrynsales@cranebsu.com  
[www.sperryn.co.uk](http://www.sperryn.co.uk)

The Company reserve the right to amend any product without notice.

S\_M940-P\_U25\_0809  
IOM\_1468\_V5