

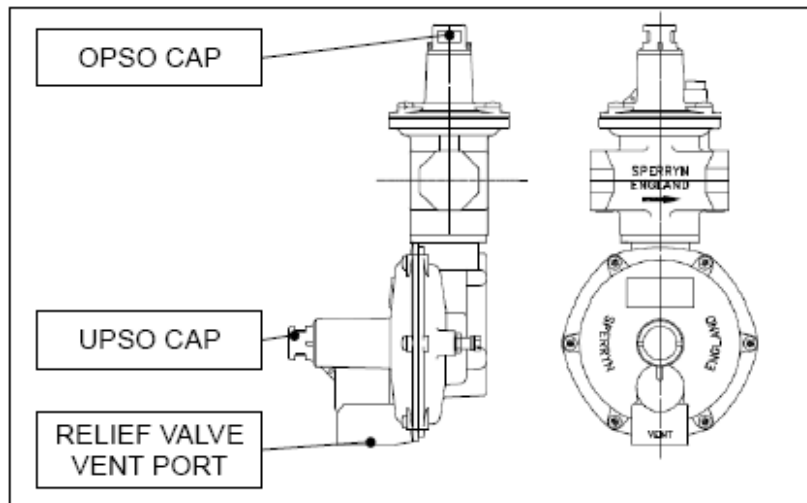
INSTALLATION INSTRUCTIONS

- The G5000 regulator will work in any orientation. However, the best performance will be achieved with the regulator in the horizontal position.
- Ensure that the mating pipe work has the correct thread configuration. The G5000 has a machined groove on the port face to show when the threads are parallel to BS21.
- Clean and prepare the pipe work with a suitable jointing compound. PTFE tape is not recommended, as any excess entering the valve may prevent correct operation.
- Mount the unit in position. Tightening must be in accordance with the relevant thread standard (BS21 or NPT).
- Once fitted, test the system for leaks. The recommended pressure for tests is 75mbar, as this can be supplied to both sides of the regulator safely. It must be noted that the safety devices will operate if they are set below the test pressure.

OPERATING INSTRUCTIONS

When the G5000 is supplied from the factory the following applies for each safety device, if fitted.

- UPSO – Under Pressure Shut Off. This device closes the regulator on loss of mains pressure, and is designed to be reset by the customer. It is located under the UPSO cap. To reset the UPSO, the spindle under the cap must be pulled to allow gas to flow through the regulator building up pressure. The relief valve is connected to this spindle. DO NOT push the spindle into the body as this will affect the relief valve and release gas. This UPSO valve is not designed to be altered in the field.
- RELIEF – The relief valve is designed to be factory set only. Its primary function is to vent off gas pressure that has built up slowly. The vented gas can be piped away by connecting to the relief valve vent port.
- OPSO – Over Pressure Shut Off. The OPSO is an emergency fail safe. If the pressure at the outlet of the regulator rises above the set value, a mechanical linkage closes the valve. In event of this valve operating, the end user should contact an approved gas engineer to inspect the installation. The installation instruction details testing at approx. 75 mbar for soundness. Should the OPSO operate the OPSO cap should be removed and the brass disc pulled out to reset the valve when the excess pressure has been vented.



DELTA FLUID PRODUCTS LTD
DELTA ROAD, ST HELENS U.K., WA9 2ED

TEL: +44 (0) 1744 611 811 FAX: +44 (0) 1744 267 91
e-mail: enquiry@deltafluidproducts.com
www.deltafluidproducts.com