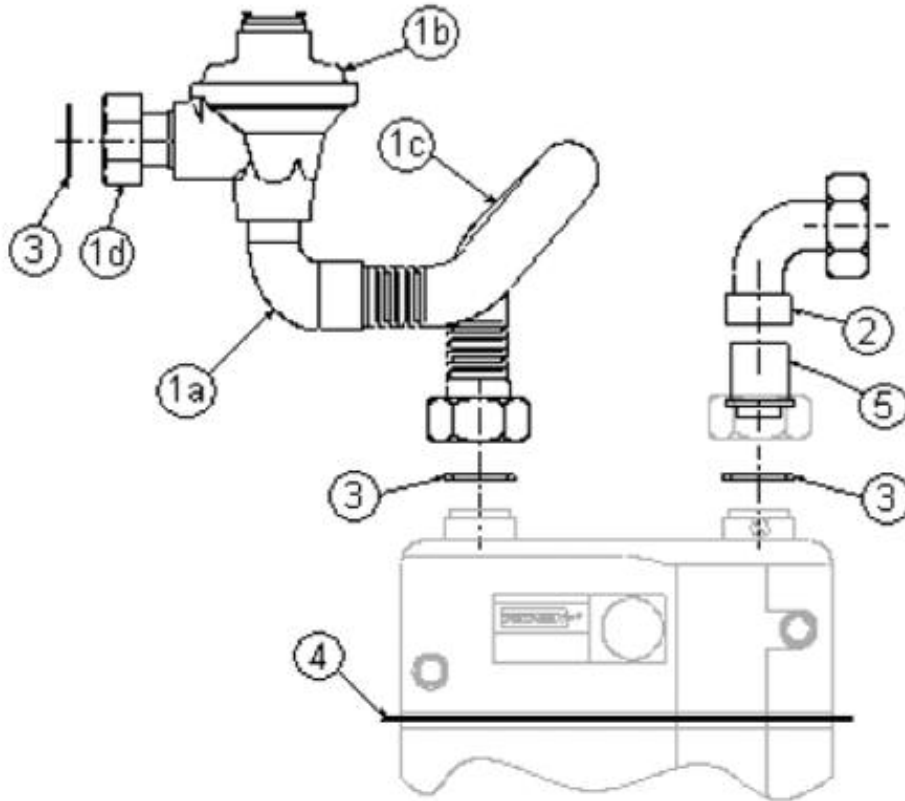


# DKW-31A - SSC3 2ND STAGE ASSEMBLED STANDARD INTALLATION KIT



Item	Name	Description	Qty
1a	G12EMF	¾" M/F MALLEABLE ELBOW	1
1b	G9400102/K	¾" METER GOVERNOR	1
1c	4065MS/375	METER FLEX 375mm ¾" MALE	1
1d	X6533	CAP NUT	1
2	22G04102X403	22mm x ¾" BSP FEMALE ELBOW	1
3	X4301	WASHER	3
4	920001	METER SEAL GASKET	1
5	X8395	LINER BS746 x R¾"	1

These gas installation kits have been pre assembled and tested during manufacture. However, in accordance with Gas Regulations the final installation must be tested to applicable standards by a qualified person.



DELTA ROAD,  
ST HELENS, WA9 2ED  
TELEPHONE: +44 (0)1744 611 819

FAX: +44 (0)1744 26791  
EMAIL: sperrynsales@cranebsu.com  
[www.sperryn.co.uk](http://www.sperryn.co.uk)

Every effort has been made to ensure that the information contained in this publication is accurate at the time of publishing. Crane Ltd assumes no responsibility or liability for typographical errors or omissions or for any misinterpretation of the information within the publication and reserves the right to change without notice.

S\_DKW-31A\_0710  
IOM\_1481\_V1